

# 3Cs: The Crick - Change and Challenges

Biological Research Facility (BRF)

Kathleen Mathers  
MRC National Institute for Medical Research

(& The Francis Crick Institute!)





Imperial College  
London



wellcome trust



The Francis Crick Institute Limited is a registered charity in England and Wales no. 1140062 and a company registered in England and Wales no. 06885462, with its registered office at 215 Euston Road, London NW1 2BE.

Sir Paul Nurse



Times Higher Education - 28 Nov '13

“Will the Francis Crick Institute change the world?”  
“I feel certain it will. When it opens in 2015, there will be a great focus on collaboration and interdisciplinary approaches. While you can never predict what research will ultimately throw up, it will open opportunities for advancing science in a unique way.”

November 2011



May 2013



THE  
FRANCIS  
CRICK  
INSTITUTE

May 2013



# The BRF

Biological Research Facility, i.e. the animal facilities







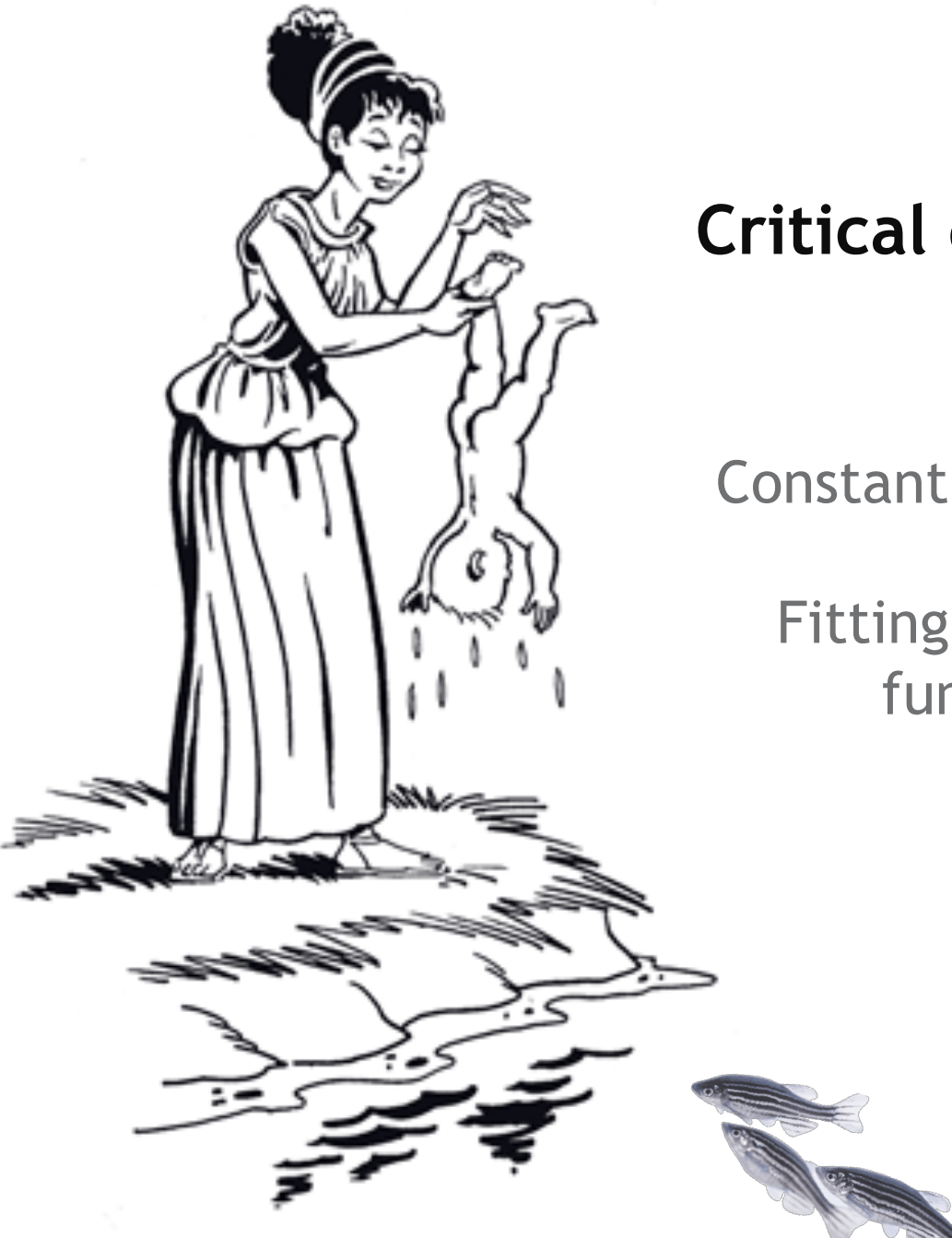
**DIRECTIVE 2010/63/EU OF THE EUROPEAN PARLIAMENT AND OF THE COUNCIL  
of 22 September 2010  
on the protection of animals used for scientific purposes**



## Critical elements for success

Constantly focus on 'Achilles heels'

Fitting building to function not  
function to building....!



# Principles of Design

- Deliver science outputs
- Maximum welfare and implementation of 3Rs
- Multidisciplinarity
- Flexibility & adaptability
- Longevity





Zone	Number of Units	Name of Unit (on plans)	Number of Cage equiv.s	Function
"SPF"	2	A1	4,000	High health status breeding areas
		A2	4,000	
Experimental	3	B1	7,000	A range of areas to deal with different science and types of usage
		B2	8,000	
		B3	7,000	
Unknown Health Status	1	C1	500	'Quick & Rapid' 'Proof of Concept'
Containment Level 3	1	D1	2,000	Infectious Disease Multiple CL3 organisms
Imaging	1	E1	500	'Non-portable' imaging modalities, MRI, PET/SPECT etc.
Aquatics	1	B4	2,000	Fish & frogs
<b>Total</b>	<b>9</b>		<b>35,000</b>	

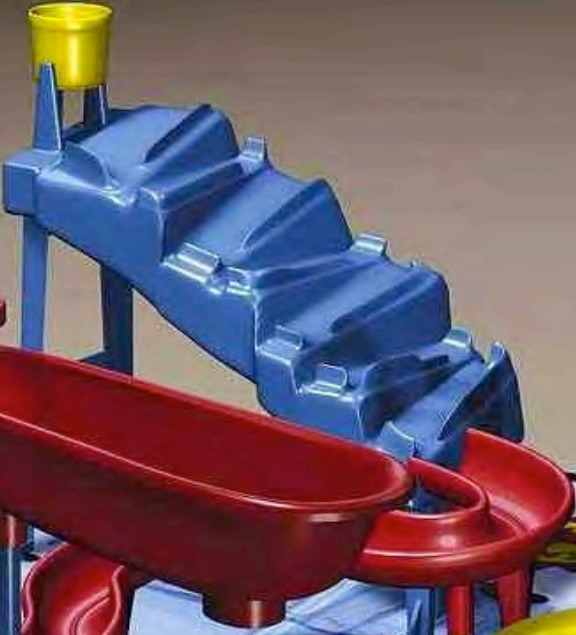
# The BRF Mock-Up











MAD DOG!  
GO BACK TO  
START

LOST 3 PIECES  
OF CHEESE

LOST 1  
PIECE OF  
CHEESE

LOST 2  
PIECES

MAD  
MUTT!

LOST 2  
PIECES

LOST 3  
PIECES

LOST 4  
PIECES

LOST 5  
PIECES

LOST 6  
PIECES

LOST 7  
PIECES

LOST 8  
PIECES

LOST 9  
PIECES

LOST 10  
PIECES

LOST 11  
PIECES

LOST 12  
PIECES

LOST 13  
PIECES

LOST 14  
PIECES

LOST 15  
PIECES

# Transition



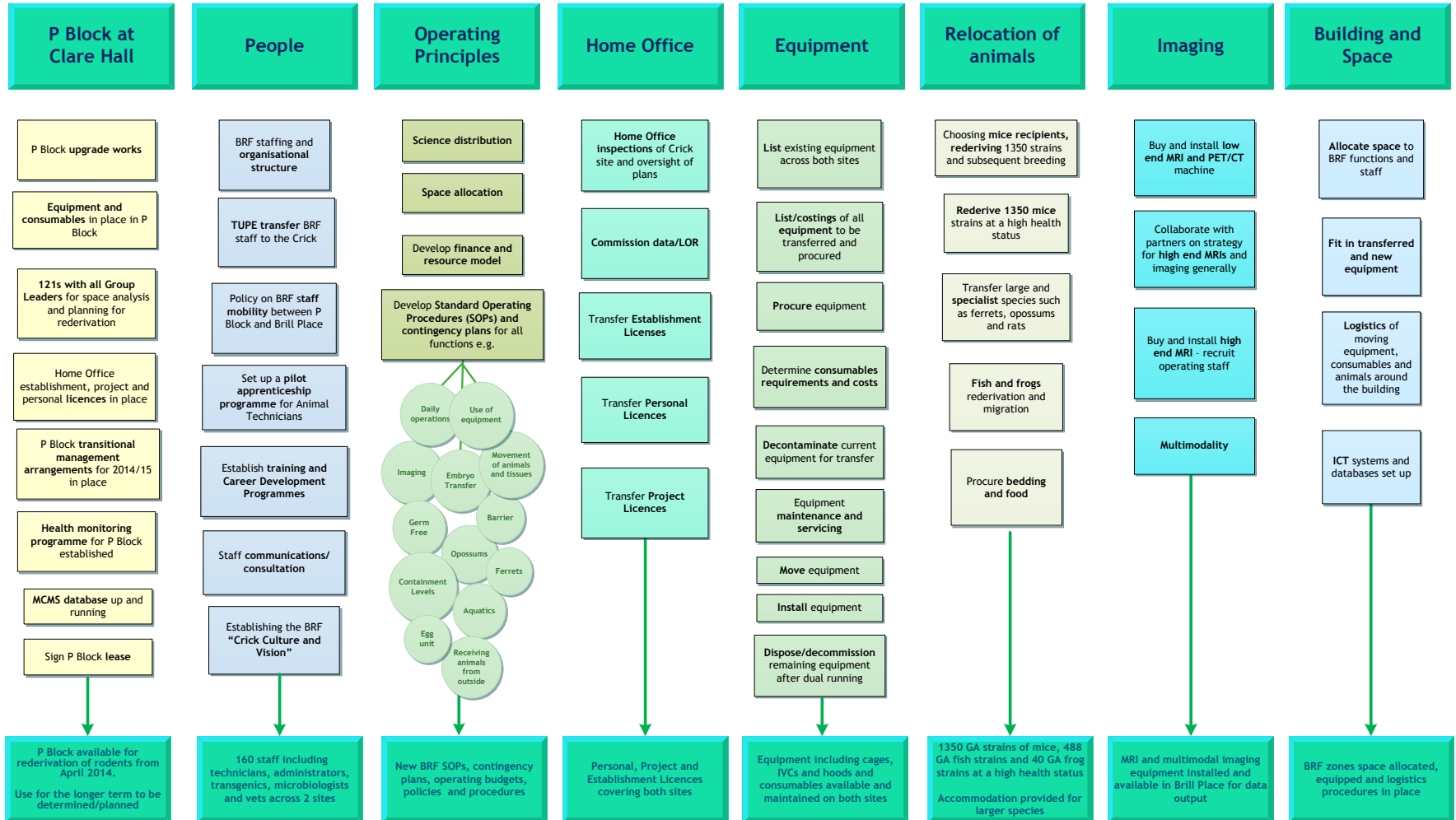
# BRF Transition - what will we be doing?

## The vision

To provide a cohesive, comprehensive, flexible and adaptable laboratory animal and technical resource that is both science and welfare driven.

## The Objective

To successfully migrate the current BRF activities from both the National Institute for Medical Research (NIMR) and the London Research Institute (LRI) to the Crick



# Crick:

## Philosophy of BRF Management

- Science and welfare/3Rs driven
- Dynamic, integrated & interactive: understand science needs
- Flexible & adaptable
- Mechanisms to review/control/promote sharing & synergies
- Proactive, ambitious & receptive to change
- Creative in training, career structure and opportunities
- Value for money
- Longevity



# Summary

- Design to match the brief
- Science and welfare led
- EU Directive & amended ASPA
- Integrated and interactive
- Proactive, ambitious and receptive to change
- Value for money



# Thank you!



Imperial College  
London



wellcome trust

